



# Understanding Exocrine Pancreatic Insufficiency (EPI).



EPI is a condition that occurs when the pancreas is unable to provide the enzymes needed to digest food. When you have exocrine pancreatic insufficiency the body can't properly digest and absorb fats, proteins, and carbohydrates from the food you eat.<sup>2,3</sup> This means that after you eat, food passes through your system without being fully digested.

**Without these enzymes, patients with EPI suffer from:**

**MALDIGESTION:** Impaired breakdown of food into nutrients for the body

**MALABSORPTION:** Inability to absorb these nutrients



**People with EPI lack these pancreatic enzymes<sup>4</sup>:**

**LIPASE:** Works with bile (a fluid produced by the liver) to break down fats.

**AMYLASE:** Breaks down carbohydrates for energy.

**PROTEASE:** Breaks down proteins.

Ask your doctor if PANCREAZE may be right for you.

Multiple ways to save! Refer to the included insert.



EAZE the Conversation with PANCREAZE.

Download the Doctor Discussion Guide and talk to your doctor about your EPI symptoms.

**pancreaze**<sup>®</sup>  
(pancrelipase)  
DELAYED-RELEASE CAPSULES

## IMPORTANT SAFETY INFORMATION

**What is the most important information I should know about PANCREAZE?**

PANCREAZE may increase your chance of having a serious, rare bowel disorder called fibrosing colonopathy that may require surgery.

Fibrosing colonopathy has been reported with high dosages of pancreatic enzyme products, usually with use over a prolonged period of time and in pediatric patients with cystic fibrosis. Colonic stricture has been reported in pediatric patients less than 12 years of age.

**Please read the PANCREAZE Medication Guide and the enclosed Full Prescribing Information.**



## The symptoms of EPI.

People with EPI suffer from one or more troublesome chronic gastrointestinal and stomach issues. Delays in treatment can impact your overall health and quality of life<sup>3,5</sup>. **Discuss with your doctor if you have one or more of the following chronic symptoms:**



STOMACH PAIN



GAS



BLOATING



DIARRHEA



GREASY STOOLS



UNEXPECTED WEIGHT LOSS

### IMPORTANT SAFETY INFORMATION

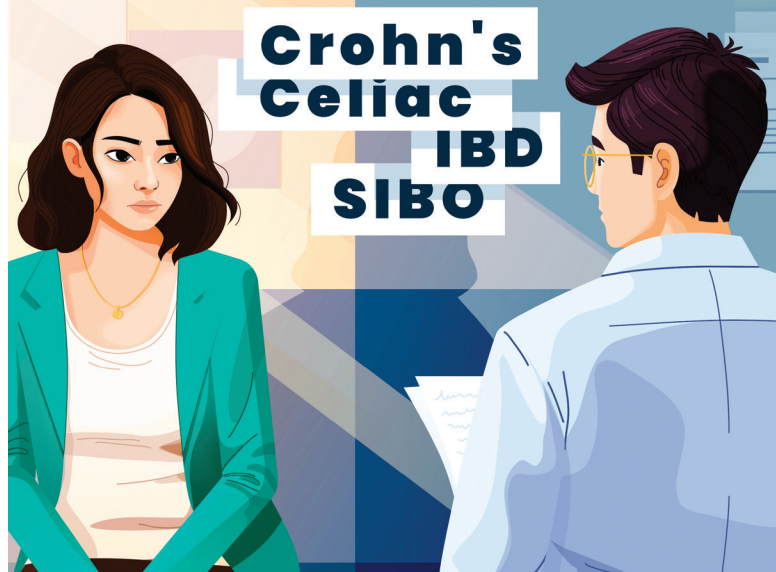
Take **PANCREAZE** exactly as prescribed by your doctor. Do not take more or less **PANCREAZE** than directed by your doctor.

Call your doctor right away if you have any **unusual or severe** stomach area (abdominal) pain, bloating, trouble passing stool (having bowel movements), nausea, vomiting, or diarrhea.

#### What should I tell my doctor before taking **PANCREAZE**?

Tell your doctor if you:

- are allergic to pork (pig) products
- have a history of blockage of your intestines, or scarring or thickening of your bowel wall (fibrosing colonopathy)



## Common conditions that lead to EPI.<sup>3</sup>

- CHRONIC PANCREATITIS (CP)
- CYSTIC FIBROSIS (CF)
- CELIAC DISEASE
- DIABETES
- INFLAMMATORY BOWEL DISEASE (IBD)
- PANCREATIC CANCER
- DIGESTIVE TRACT SURGERY

### IMPORTANT SAFETY INFORMATION

#### What should I tell my doctor before taking **PANCREAZE**?

Tell your doctor if you:

- have gout, kidney disease, or high blood uric acid (hyperuricemia)
- have trouble swallowing capsules
- have any other medical condition
- are pregnant or plan to become pregnant
- are breastfeeding or plan to breastfeed

**Please read the **PANCREAZE** Medication Guide and the enclosed Full Prescribing Information.**



**PANCREAZE** is a prescription medicine that replaces the enzymes that you or your child needs to digest food properly due to EPI.

The enzymes in **PANCREAZE** help the body digest food properly and absorb fat, protein and carbohydrates — which are needed for healthy growth, weight gain and improved nutritional health.

### IMPORTANT SAFETY INFORMATION

**Tell your doctor about all the medicines you take**, including prescription and nonprescription medicines, vitamins, and herbal supplements.

#### **What are the possible side effects of PANCREAZE?**

PANCREAZE may cause serious side effects, including:

- **A rare bowel disorder** called fibrosing colonopathy
- **Irritation of the inside of your mouth.** This can happen if PANCREAZE is not swallowed completely

PANCREAZE  
is a pancreatic enzyme  
replacement therapy.<sup>1</sup>

How it works:

1

**PANCREAZE** contains a mixture of digestive enzymes, including lipases, proteases, and amylases.

2

**PANCREAZE** comes in the form of capsules. Inside, there are several tiny “beads” that contain enzymes. Each bead is covered with a special enteric coating.

3

When the capsule enters the small intestine, the pH triggers the coating to dissolve and release the enzymes that are necessary to digest the food you eat.

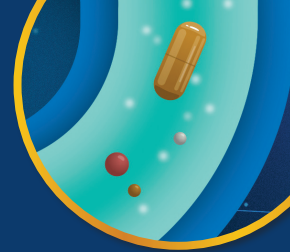
### IMPORTANT SAFETY INFORMATION

#### **What are the possible side effects of PANCREAZE?**

PANCREAZE may cause serious side effects, including:

- PANCREAZE and other pancreatic enzyme products are made from the pancreas of pigs, the same pigs people eat as pork. These pigs may carry viruses. Although it has never been reported, it may be possible for a person to get a viral infection from taking pancreatic enzyme products that come from pigs.
- **Allergic reactions** including trouble with breathing, skin rashes, or swollen lips

**Please read the PANCREAZE Medication Guide and the enclosed Full Prescribing Information.**



FAT ABSORPTION

PROTEIN ABSORPTION

EPI SYMPTOMS

in two weeks<sup>6</sup>

Clinically-  
proven results.

PANCREAZE is clinically proven to improve EPI symptoms such as abdominal pain, bloating, diarrhea, and greasy stools.<sup>6</sup>



**PANCREAZE is the only approved enzyme replacement capsule that does not use phthalates as an additive in any of its doses.<sup>7</sup>**

To learn more about phthalates and their use in pancreatic enzymes see: [CFF.org/phthalates](https://www.cff.org/phthalates)



#### IMPORTANT SAFETY INFORMATION

**What are the possible side effects of PANCREAZE?**

PANCREAZE may cause serious side effects, including:

- **Increase in blood uric acid levels.** This may cause worsening of swollen, painful joints (gout) caused by an increase in your blood uric acid levels. This may occur if you have gout or renal impairment. Contact your healthcare provider if you experience pain, stiffness, redness or swelling of your joints.



**Maya, 29**  
Inflammatory bowel disease patient.  
Living in the moment - with EPI.  
*Actor portrayal*

**Barry, 57**  
Whipple surgery patient.  
Living in the moment - with EPI.  
*Actor portrayal*

**84%**  
of patients reported  
feeling improved  
symptoms after  
starting PANCREAZE.

Prior to being diagnosed and treated for EPI, the majority of patients surveyed stated their symptoms made them anxious about navigating daily life, were worried about interruptions from urgent, unpredictable symptoms, and were upset because they didn't know what was causing their symptoms.\*

\* April 2025 online Pancreaze patient survey of 67 respondents. Respondents were not remunerated for their participation in the survey.

#### IMPORTANT SAFETY INFORMATION

**The most common side effects include pain in your stomach (abdominal pain) and gas.**

These are not all the side effects of PANCREAZE. Talk to your doctor about any side effect that bothers you or does not go away. You may report side effects to the FDA at 1-800- FDA-1088 or [www.fda.gov/medwatch](http://www.fda.gov/medwatch). You may also report side effects to VIVUS LLC at 1-888-998-4887.

**Please read the Medication Guide and the enclosed Full Prescribing Information.**

# Taking PANCREAZE

**PANCREAZE comes in 6 strengths (lipase units), ensuring flexible dosing for each patient's unique needs.<sup>1</sup>**

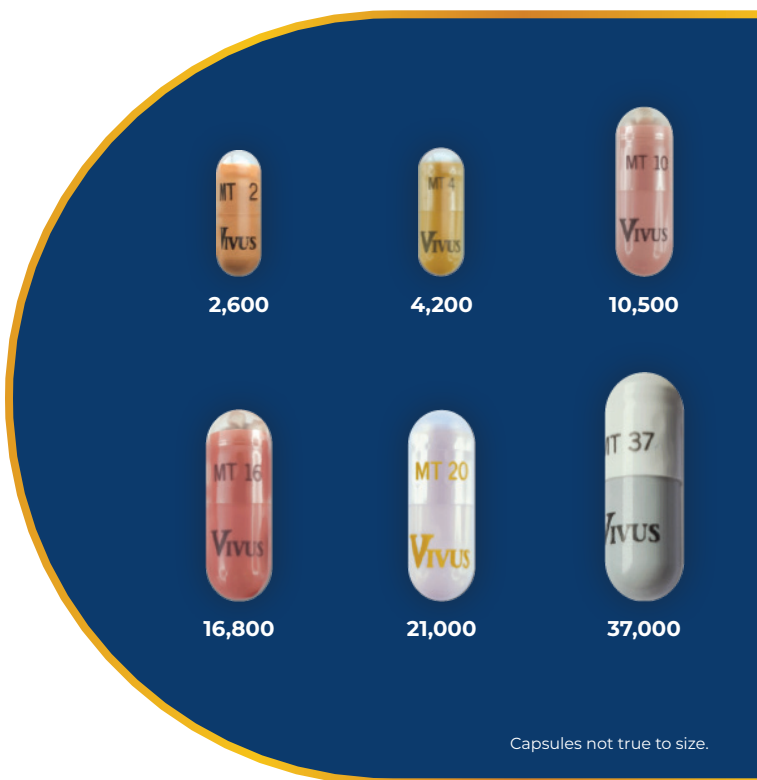
Your doctor will individualize your dose based on age, weight and symptoms. **Effective dosing strategies will vary by patient. Always take PANCREAZE exactly as recommended by your doctor.**



## IMPORTANT SAFETY INFORMATION

### How do I take PANCREAZE?

- PANCREAZE should be stored at room temperature in a dry place and in its original container. After opening, the bottle should be kept closed tightly between uses.
- If a dose is missed, the next dose should be taken with the next snack or meal as directed. Doses should not be doubled.
- Take PANCREAZE with meals or snacks.
- Swallow capsules whole.



Dose may be changed by your doctor based on the amount of fatty foods consumed or based on your body weight. Fatty meals need more enzymes to work properly, and getting too few lipase units is a common cause of ongoing symptoms. Talk to your doctor.

## IMPORTANT SAFETY INFORMATION

### How do I take PANCREAZE?

- For adult and pediatric patients unable to swallow intact capsules, the capsule contents may be sprinkled on a small amount soft acidic food with a pH of 4.5 or less (e.g., applesauce).
- For pediatric patients birth to 12 months of age, PANCREAZE capsules can also be opened, and the capsule contents sprinkled directly into the infant's mouth.

**Please read the PANCREAZE Medication Guide and the enclosed Full Prescribing Information.**

# Taking PANCREAZE

## FOR CHILDREN OVER 12 MONTHS AND ADULTS:



Take **PANCREAZE** with a meal or snack and plenty of fluid. If you eat a lot of meals or snacks in a day, be careful not to go over your total daily dose.



**Do not crush or chew the capsules or their contents or hold the capsule or contents in your mouth.** Crushing, chewing or holding the **PANCREAZE** capsules in your mouth may cause irritation in your mouth or change the way **PANCREAZE** works in your body.

## FOR CAREGIVERS OF INFANTS (CHILDREN UP TO 12 MONTHS):



Administer immediately prior to each feeding.



**Do not mix directly with breast milk or formula.** Sprinkle the capsule contents on a small amount of acidic soft food with a pH of 4.5 or less, such as applesauce, or sprinkle directly into the infant's mouth.



**Immediately provide additional breast milk or formula to ensure the medicine is swallowed completely.**

## IMPORTANT SAFETY INFORMATION

### How do I take PANCREAZE?

- Consume sufficient liquids (juice, water, breast milk, or formula) and visually inspect an infant's mouth to ensure complete swallowing of PANCREAZE capsules or capsule contents.
- Do not crush or chew PANCREAZE capsules or capsule contents.

**Please read the Medication Guide and the enclosed Full Prescribing Information.**



## REFERENCES:

1. PANCREAZE Full Prescribing Information. Campbell, CA: VIVUS LLC; 2024.
2. Cleveland Clinic. (n.d.). Exocrine Pancreatic Insufficiency (EPI). Retrieved from <https://my.clevelandclinic.org/health/diseases/21577-exocrine-pancreatic-insufficiency-epi>
3. Othman MO, et al. Introduction and practical approach to exocrine pancreatic insufficiency for the practicing clinician. *Int J Clin Pract.* 2018;72:e13066.
4. Cleveland Clinic. (n.d.). Pancreas. Retrieved from <https://my.clevelandclinic.org/health/body/21743-pancreas>.
5. Whitcomb, DC, et al. AGA Clinical Practice Update on the Epidemiology, Evaluation, and Management of Exocrine Pancreatic Insufficiency: Expert Review. *Gastroenterology.* 2023;165:1292–1301
6. Trapnell BC, et al. Efficacy and safety of PANCREAZE<sup>®</sup> for treatment of exocrine pancreatic insufficiency due to cystic fibrosis. *J Cyst Fibros.* 2011;10(5):350-356.
7. Cystic Fibrosis Foundation. (n.d.). Phthalates. Retrieved from <https://www.cff.org/>

Transform your mealtimes from chance to consistency with **PANCREAZE**.

**Talk to your doctor to see if PANCREAZE is right for you.**




For additional information about **PANCREAZE**, including frequently asked questions, please visit: **PANCREAZE.COM**.



Save on the cost of your medication with the **PANCREAZE** Savings Card! Sign Up: [PancreazeEngage.com](https://PancreazeEngage.com).

The only approved **PERT** capsules that do not use phthalates as an additive in any of its six doses<sup>1,7</sup>

 From a trusted U.S.-based company



**PANCREAZE...**

The symptoms of EPI™

Please read the accompanying **PANCREAZE** Medication Guide and Full Prescribing Information and discuss any questions you have with your doctor.



**VIVUS**

©2026 VIVUS LLC. All rights reserved.  
500167.07-USP 01/2026